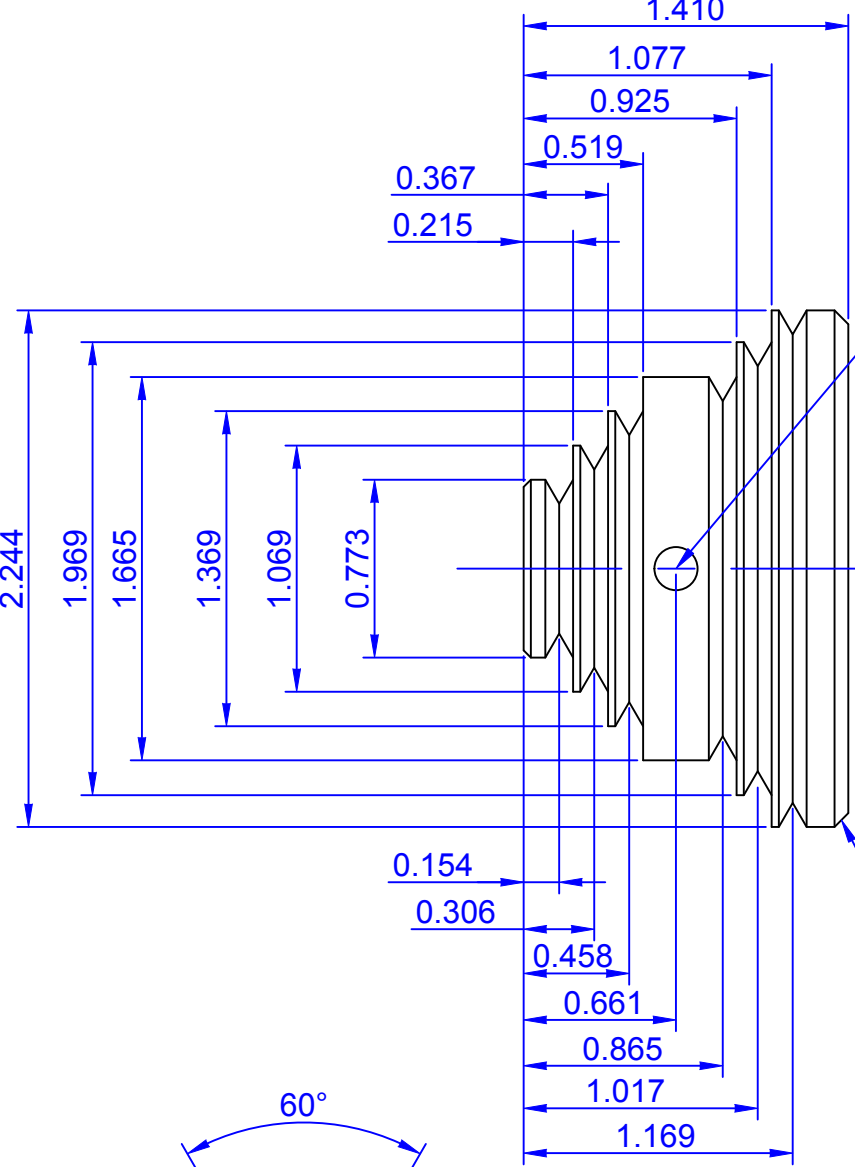
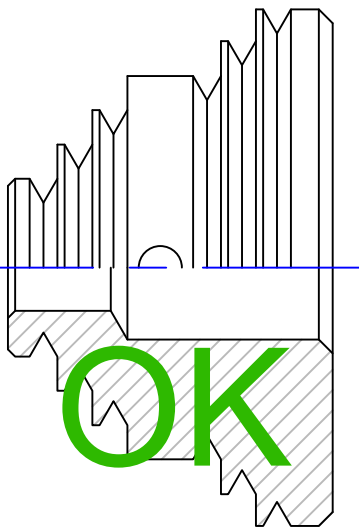
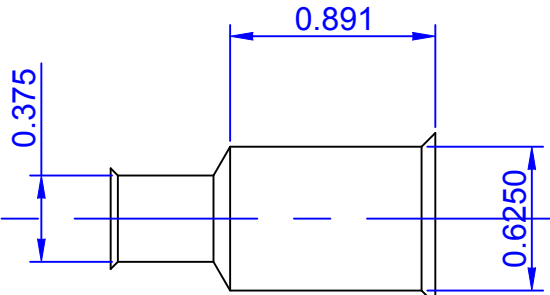


This document/file is placed in the **PUBLIC DOMAIN**.
The author assumes no liability for the accuracy, fitness
or application of the information or design herein.
Lewis Balentine, Houston, Texas, 22 January 2020

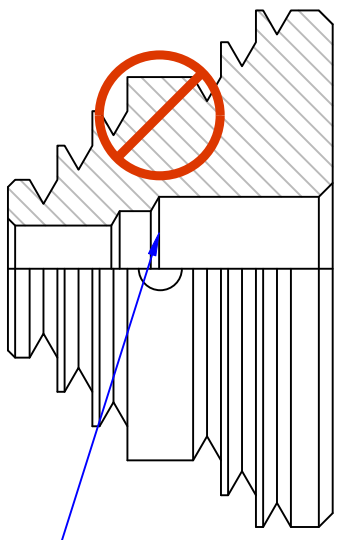
Unless otherwise noted all dimensions are in inches



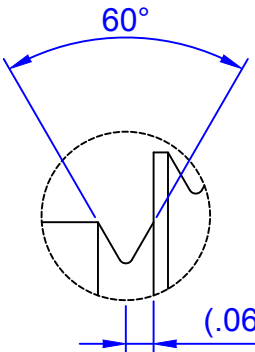
10 Set Screw



Chamfer 45 Degrees Typical



Finish Bore
Must Extend
Beyond Screw



**BELT GROOVE
DETAIL**

This is the pulley used on the Taig lathe head stock. It has a mating motor shaft pulley for use with either a 3/8, 1/2 or 5/8 inch diameter shaft motors.